

GREEN AUDIT REPORT

2022-2023

Woxsen University



Prepared By: Global Management Certification Services Pvt. Ltd.

Approved By: Chairman, Green Audit

Green Audit Assessment Team

K.V.Murthy- Lead Auditor



K.S.N.prasad- Lead Auditor



A.Rekha Purnima- Lead Auditor



P.Yadgiri- Lead Auditor



Ch.Ramarao- Lead Auditor



CONTENTS

Sr. No.	Titles/Topics	Page No.
1	INTRODUCTION	4
2	OBJECTIVES	4
3	METHODOLOGY	5
4	ABOUT THE University	5
5	VISION & MISSION STATEMENT	6
6	GREEN AUDITING	6
7	OBSERVATIONS	7
8	LAND USE ANALYSIS AT WOXSEN University (As on 29-10-2019)	7
9	GEOGRAPHICAL LOCATION WITH CAMPUS MAP IN SCALE	7
10	TREE DIVERSITY OF WOXSEN University	13
11	FAUNAL DIVERSITY IN WOXSEN University	18
12	WEATHER DATA OF WOXSEN University	23
13	AIR QUALITY OF WOXSEN University	24
14	WATER ANALYSIS REPORT OF WOXSEN University	26
15	NOISE LEVEL IN THE SURROUNDING OF WOXSEN University	28
16	WASTE DISPOSAL AT WOXSEN University	31
17	TRANSPORTATION AT WOXSEN University	32
18	ELECTRICAL POWER CONSUMPTION AT WOXSEN University	33
19	EXPENDITURE ON GREEN INITIATIVES DURING THE LAST FIVE YEARS	37

INTRODUCTION:

Green Audit is a process of systematic identification, quantification, recording, reporting and analysis of components of environmental diversity of institute. It aims to analyse environmental practices within and outside of the concerned place, which will have an impact on the eco-friendly atmosphere. Green audit is a valuable means for a University to determine how and where they are using the most energy or water or other resources; the University can then consider how to implement changes and make savings. It can create health consciousness and promote environmental awareness, values and ethics. It provides staff and students better understanding of Green impact on campus. If self-enquiry is a natural and necessary outgrowth of a quality education, it could also be stated that institutional self-enquiry is a natural and necessary outgrowth of a quality educational institution. Thus it is imperative that the University evaluate its own contributions toward a sustainable future. As environmental sustainability is becoming an increasingly important issue for the nation, the role of higher educational institutions in relation to environmental sustainability is more prevalent.

The rapid urbanization and economic development at local, regional and global level has led to several environmental and ecological crises. On this background it becomes essential to adopt the system of the Green Campus for the institutes which will lead for sustainable development and at the same time reduce a sizable amount of atmospheric CO₂ from the environment. The National Assessment and Accreditation Council, New Delhi (NAAC) has made it mandatory that all Higher Educational Institutions should submit an annual Green Audit Report. Moreover, it is part of Corporate Social Responsibility of the Higher Educational Institutions to ensure that they contribute towards the reduction of global warming through carbon footprint reduction measures.

OBJECTIVES:

In recent time, the Green Audit of an institution has been becoming a paramount important for self-assessment of the institution which reflects the role of the institution in mitigating the present environmental problems. The University has been putting efforts to keep our environment clean since its inception. Therefore, the purpose of the present green audit is to identify, quantify, describe and prioritize framework of Environment Sustainability in compliance with the applicable regulations, policies and standards. The main objectives of carrying out Green Audit are:

- To map the Geographical Location of the University

- To document the floral and faunal diversity of the University
 - To record the meteorological parameter of University
 - To document the ambient environmental condition of weather, air, water and noise of the University
 - To document the waste disposal system
 - To estimate the Energy requirements of the University
 - To report the expenditure on green initiatives during the last five years
-

METHODOLOGY:

The purpose of the green audit of WOXSEN University is to ensure that the practices followed in the campus are in accordance with the Green Policy of the country. The methodology includes: collection of data, physical inspection of the campus, observation and review of the documentation and data analysis.

ABOUT THE University:

Woxsen was established in 2014 by Praveen K Pula, with a vision 'To build an institution of excellence in higher learning led through disruption, develop a multi-cultural yet inclusive cohort of global professionals and contribute towards societal welfare'. The institution is backed by 4 core pillars of applied learning, academic excellence, global outlook and diversity-inclusivity.

Woxsen gained the reputed University status in 2020 and has been successfully accredited by NBA, AICTE, COA & The Bar Council of India alongside having international memberships with AACSB, AMBA, AMDISA, EFMD, RRBM, PRME, GRI and GBSN.

Pinakin Educational Trust works as the sponsoring and managing body of WoxsenUniversity.

Woxsen was pioneered with the Business school and has exponentially expanded into 6 additional schools - Arts & Design instituted in 2016, Architecture & Planning in 2019, Technology in 2020, Liberal Arts & Humanities and Law in 2022, with School of Sciences in 2023. It offers UG, PG and Doctoral programs with Executive Education and Certification courses.

Woxsen University has been consistently ranked in top positions by the Times. Outlook, B-School, IIRF, BusinessWorld, PRME and other prestigious bodies, including achieving the highest level of 5 in the Global Positive Impact Rating for its positive social impact and sustainability endeavors and being declared as a Principles for Responsible Management Education Champion 2023.

With prime focus on internationalization, the university has 110+ international partners spread across more than 40+ countries offering opportunities for student & faculty exchange, research collaboration, lecture series, global forums, corporate projects, dual degrees, progressive studies, centres of excellence and many more.

Embracing the entrepreneurial spirit, Woxsen has set up the Trade Tower, an incubation centre that induces, guides, refines and funds potential in-house startups.

Besides quality academia, the sprawling 200 acre campus complements holistic development with its world-class infrastructure, unmatched facilities, fully-equipped labs, international sports arena and expansive library.

With 100% placement track-record in its flagship programs, Woxsen is a name to reckon with amongst recruiters representing leading corporates.

The institution's strength lies in its history & ethos: rejecting the status quo, redefining” learning methodologies and shaping real-world professionals. Woxsen is all set to revolutionize the educational realm of India for the better!

VISION & MISSION VISION STATEMENT:

OUR VISION

- To build an institution of excellence in higher learning led through disruption, develop a multi-cultural yet inclusive cohort of global professionals and contribute towards societal welfare.

OUR MISSION

- To build an institution of excellence in higher learning led through disruption, develop a multi-cultural yet inclusive cohort of global professionals and contribute towards societal welfare.

GREEN AUDITING:

The University has adopted the ‘Green Campus’ system for environmental conservation and sustainability. There are main three pillars i.e. zero environmental foot print, positive impact on occupant health and performance and 100% graduates demonstrating environmental literacy. The goal is to reduce CO₂ emission, energy and water use, while creating atmosphere where students can learn and be healthy.

LAND USE ANALYSIS, WOXSEN University (As on 22.10.2022):

GENERAL OVERVIEW OF THE CONCEPT OF LAND-USE

Land use refers to man’s activities and the various uses which are carried on and derived from land. Viewing the earth from space, it is now very crucial in man’s activities on natural resource. In situations of rapid changes in land use, observations of the Earth from space give the information of human activities and utilization of the landscape.

Remote sensing and GIS techniques are now providing new tools for advanced land use mapping and planning. The collection of remotely sensed data facilitates the synoptic analyses of earth system, functions, patterning, and change in the local, regional as well as at global scales over time. Satellite imagery particularly is a valuable tool for generating land use map.

METHODOLOGY ADOPTED FOR LAND USE MAPPING

Three types of data that are GPS points, field survey data and Google earth data for Geo referencing have been used in this study. Land use map of the study area have been prepared using the above three types of data with the help of ArcGis Pro software.

DATA PROCESSING AND ANALYSIS

Land use map preparation is executed through the following steps:

Acquisition of data (Location: 17°38'51.7"N 77°47'55.3"E), Geo-coding and Geo referencing of satellite imageries by extracting the ground control points. Supervised classification was carried out with the aid of ground truth data collected during field survey. Scanning and digitization of maps and editing of all the Georeferenced maps were done using GIS. Data manipulation and analysis and linking the spatial data with the attribute data for creation of topology was carried out using GIS software. Creation of GIS output in the form of land use map showing various land use have been prepared.

Therefore, attempt has been made in this study to map land use for WOXSSEN University with a view to detect the land consumption in the built-up land area using both remote sensing and GIS techniques.

GEOGRAPHICAL LOCATION WITH CAMPUS MAP IN SCALE

The University has a **sprawling pollution-free campus spread over 200 acres** of land in the heart of Telangana. It has an ideal geographical location with the proximity to the important cities of the region i.e. Karnataka,, Telangana, Maharastra.



Photo 1: Map of University Campus

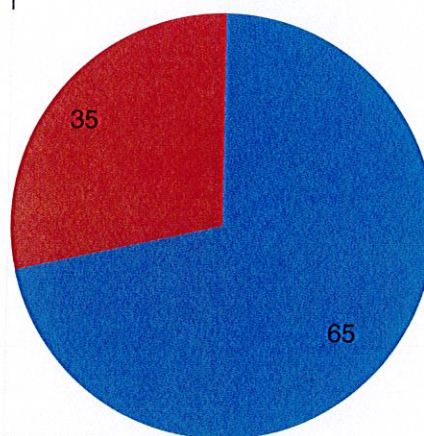


Photo 2: Aerial View of University Campus Part 2 (Source Google Earth)

LAND USE DATA OF WOXSSEN University, HYDERABAD

S. No.	Particular	Area in Sq.m	Area (%)
1	Ground coverage Area	60700.00	10.00
2	Open Area	397534.65	65.49
3	Greenbelt Area	63077.35	10.39
4	Road Area	85716.00	14.12
	Total Area	607028.00	100.00

LAND USE
ANALYSIS,



The total area of WOXSSEN University is 607028.00 m² out of which the built up area (include Roads) is 24% (i.e 146416 m²) and plantation area is 10.39% (i.e. 63077.35 m²).

LAND USE (BUILT UP AREA) ANALYSIS:

The built up area of 24% (i.e 146416 m²) consists of the following regions as stated below for land consumption in built up area of WOXSSEN University:

The WOXSSEN University is densely built up having Administrative Blocks, Central Workshops, Girls Hostels, Principal's Residence, Staff Flats, Gymnasium, University Cafeteria and Boys Hostels, Auditorium, Drawing hall, Seminar Hall, Tutorial rooms, Computer Labs, Research Labs, Amenities Block, Instruction area, Common facilities, Sports Stadium indoor and outdoor, and Athletic Tracks.

Table: Area occupied by various buildings at WOXSSEN University,

S.No	Room No	Room type (mention Class room / Lab/Toilet, etc.)	Carpet Area in Sqm	Completion of Flooring	Completion of Walls and Painting	Completion of Electrification and Lighting
INSTRUCTION AREA						
1	1008	Laboratory	66	Completed	Completed	Completed
2	1101	Classroom	66	Completed	Completed	Completed
3	1102	Classroom	66	Completed	Completed	Completed
4	1104	Laboratory	66	Completed	Completed	Completed
5	1106	Laboratory	66	Completed	Completed	Completed
6	1107	Laboratory	66	Completed	Completed	Completed
7	1108	Laboratory	66	Completed	Completed	Completed
8	1111	Classroom	66	Completed	Completed	Completed
9	1201	Classroom	66	Completed	Completed	Completed
10	1202	Classroom	66	Completed	Completed	Completed
11	1204	Laboratory	66	Completed	Completed	Completed
12	1205	Laboratory	66	Completed	Completed	Completed
13	1207	Classroom	66	Completed	Completed	Completed
14	1208	Classroom	66	Completed	Completed	Completed
15	1209	Classroom	66	Completed	Completed	Completed
16	1301	Classroom	66	Completed	Completed	Completed
17	1302	Classroom	66	Completed	Completed	Completed
18	1305	Seminar Hall	128.4	Completed	Completed	Completed
19	1308	Classroom	66	Completed	Completed	Completed
20	1310	Classroom	66	Completed	Completed	Completed
21	2002	Laboratory	140	Completed	Completed	Completed
22	2003	Laboratory	105	Completed	Completed	Completed
23	2005	Laboratory	74	Completed	Completed	Completed
24	2006	Laboratory	140	Completed	Completed	Completed
25	2007	Laboratory	74	Completed	Completed	Completed
26	2008	Research Laboratory	225	Completed	Completed	Completed
27	2009	Laboratory	140	Completed	Completed	Completed

Green Audit Report, WOU

28	2011	Workshop	210	Completed	Completed	Completed
29	2101	Classroom	74	Completed	Completed	Completed
30	2102	Laboratory	140	Completed	Completed	Completed
31	2103	Laboratory	74	Completed	Completed	Completed
32	2106	Additional Workshop	112	Completed	Completed	Completed
33	2108	Classroom	74	Completed	Completed	Completed
34	2109	Classroom	120	Completed	Completed	Completed
35	2201	Classroom	74	Completed	Completed	Completed
36	2202	Laboratory	136	Completed	Completed	Completed
37	2203	Classroom	74	Completed	Completed	Completed
38	2205	Laboratory	74	Completed	Completed	Completed
39	2206	Laboratory	135	Completed	Completed	Completed
40	2207	Classroom	74	Completed	Completed	Completed
41	2208	Seminar Hall	232	Completed	Completed	Completed
42	2209	Additional Workshop	200	Completed	Completed	Completed
43	2301	Laboratory	140	Completed	Completed	Completed
44	2302	Classroom	74	Completed	Completed	Completed
45	2303	Classroom	74	Completed	Completed	Completed
46	2307	Seminar Hall	140	Completed	Completed	Completed
47	2308	Laboratory	74	Completed	Completed	Completed
48	2309	Classroom	74	Completed	Completed	Completed
49	2311	Classroom	102	Completed	Completed	Completed
50	2312	Tutorial Room	105	Completed	Completed	Completed
51	3002	Classroom	78	Completed	Completed	Completed
52	3003	Classroom	78	Completed	Completed	Completed
53	3004	Classroom	78	Completed	Completed	Completed
54	3102	Classroom	78	Completed	Completed	Completed
55	3103	Classroom	78	Completed	Completed	Completed
56	3104	Classroom	78	Completed	Completed	Completed
57	3202	Classroom	78	Completed	Completed	Completed
58	3203	Classroom	78	Completed	Completed	Completed
59	3204	Classroom	72	Completed	Completed	Completed

Green Audit Report, WOU

60	3207	Seminar Hall	140	Completed	Completed	Completed
61	3302	Classroom	78	Completed	Completed	Completed
62	3303	Classroom	96	Completed	Completed	Completed
63	3304	Classroom	96	Completed	Completed	Completed
64	3402	Classroom	66	Completed	Completed	Completed
65	3403	Classroom	66	Completed	Completed	Completed
66	3404	Classroom	66	Completed	Completed	Completed
67	4001	Workshop	212	Completed	Completed	Completed
68	5001	Laboratory	96	Completed	Completed	Completed
69	5002	Laboratory	96	Completed	Completed	Completed
70	5101	Seminar Hall	310	Completed	Completed	Completed
71	5104	Laboratory	72	Completed	Completed	Completed
72	5301	Seminar Hall	310	Completed	Completed	Completed
73	5304	Additional Workshop	72	Completed	Completed	Completed
74	5305	Additional Workshop	72	Completed	Completed	Completed
75	7004	Other	20	Completed	Completed	Completed
76	7005	Seminar Hall	120	Completed	Completed	Completed
77	7006	Laboratory	66	Completed	Completed	Completed
78	7007	Laboratory	66	Completed	Completed	Completed
79	7008	Laboratory	66	Completed	Completed	Completed
80	7104	Classroom	66	Completed	Completed	Completed
81	7105	Laboratory	66	Completed	Completed	Completed
82	7106	Laboratory	66	Completed	Completed	Completed
83	7108	Classroom	66	Completed	Completed	Completed
84	7202	Classroom	66	Completed	Completed	Completed
85	7204	Classroom	66	Completed	Completed	Completed
86	7205	Classroom	66	Completed	Completed	Completed
87	7206	Laboratory	66	Completed	Completed	Completed
88	7207	Laboratory	66	Completed	Completed	Completed
89	7208	Classroom	66	Completed	Completed	Completed
90	7302	Classroom	66	Completed	Completed	Completed
91	7304	Classroom	66	Completed	Completed	Completed

Green Audit Report, WOU

92	7305	Classroom	66	Completed	Completed	Completed
93	7306	Laboratory	66	Completed	Completed	Completed
94	7307	Classroom	66	Completed	Completed	Completed
95	7404	Laboratory	66	Completed	Completed	Completed
96	7405	Laboratory	66	Completed	Completed	Completed
97	7406	Tutorial Room	46.7	Completed	Completed	Completed
98	7408	Tutorial Room	46.5	Completed	Completed	Completed
99	8005	Laboratory	76	Completed	Completed	Completed
100	8011	Laboratory	144	Completed	Completed	Completed
101	8012	Laboratory	144	Completed	Completed	Completed
102	8014	Classroom	70	Completed	Completed	Completed
103	8101	Classroom	96	Completed	Completed	Completed
104	8102	Classroom	96	Completed	Completed	Completed
105	8104	Laboratory	140	Completed	Completed	Completed
106	8110	Classroom	70	Completed	Completed	Completed
107	8111	Classroom	70	Completed	Completed	Completed
108	8112	Classroom	70	Completed	Completed	Completed
109	8114	Classroom	70	Completed	Completed	Completed
110	8115	Laboratory	70	Completed	Completed	Completed
111	8201	Classroom	96	Completed	Completed	Completed
112	8203	Classroom	96	Completed	Completed	Completed
113	8206	Classroom	96	Completed	Completed	Completed
114	8207	Classroom	96	Completed	Completed	Completed
115	8209	Classroom	74	Completed	Completed	Completed
116	8210	Classroom	74	Completed	Completed	Completed
117	8211	Classroom	74	Completed	Completed	Completed
118	8212	Classroom	74	Completed	Completed	Completed
119	8213	Classroom	74	Completed	Completed	Completed
120	8214	Classroom	74	Completed	Completed	Completed
121	8215	Classroom	74	Completed	Completed	Completed
122	8216	Classroom	74	Completed	Completed	Completed
123	8218	Drawing Hall	200	Completed	Completed	Completed

Green Audit Report, WOU

124	8301	Classroom	96	Completed	Completed	Completed
125	8304	Laboratory	144	Completed	Completed	Completed
126	8306	Classroom	70	Completed	Completed	Completed
127	8309	Laboratory	132	Completed	Completed	Completed
128	8310	Laboratory	132	Completed	Completed	Completed
129	8314	Classroom	74	Completed	Completed	Completed
130	8315	Classroom	74	Completed	Completed	Completed
131	8316	Drawing Hall	132	Completed	Completed	Completed
132	8401	Drawing Hall	132	Completed	Completed	Completed
133	8403	Laboratory	132	Completed	Completed	Completed
134	8404	Laboratory	132	Completed	Completed	Completed
135	8405	Seminar Hall	274	Completed	Completed	Completed
136	9003	Classroom	74	Completed	Completed	Completed
137	9004	Classroom	74	Completed	Completed	Completed
138	9005	Classroom	74	Completed	Completed	Completed
139	9012	Computer Laboratory	140	Completed	Completed	Completed
140	9013	Classroom	90	Completed	Completed	Completed
141	9014	Seminar Hall	144.25	Completed	Completed	Completed
142	9101	Classroom	90	Completed	Completed	Completed
143	9102	Classroom	90	Completed	Completed	Completed
144	9103	Classroom	90	Completed	Completed	Completed
145	9104	Classroom	90	Completed	Completed	Completed
146	9111	Tutorial Room	72	Completed	Completed	Completed
147	9112	Classroom	90	Completed	Completed	Completed
148	9201	Classroom	72	Completed	Completed	Completed
149	9202	Tutorial Rooms – PG	33	Completed	Completed	Completed
150	9203	Tutorial Rooms – PG	33	Completed	Completed	Completed
151	10001	Workshop	298	Completed	Completed	Completed
152	11001	Laboratory	150	Completed	Completed	Completed
153	11003	Laboratory	96	Completed	Completed	Completed
154	11004	Laboratory	96	Completed	Completed	Completed
155	11005	Laboratory	96	Completed	Completed	Completed

Green Audit Report, WOU

156	12001	Laboratory	130	Completed	Completed	Completed
157	12002	Laboratory	128	Completed	Completed	Completed
158	12003	Laboratory	128	Completed	Completed	Completed
159	1304/1	Tutorial Rooms – PG	33	Completed	Completed	Completed
160	1304/2	Tutorial Rooms – PG	33	Completed	Completed	Completed
161	1307/1	Tutorial Room	33	Completed	Completed	Completed
162	1307/2	Tutorial Room	33	Completed	Completed	Completed
163	2105/1	Tutorial Rooms – PG	40	Completed	Completed	Completed
164	2105/2	Tutorial Rooms – PG	40	Completed	Completed	Completed
165	2105/3	Tutorial Rooms – PG	40	Completed	Completed	Completed
166	2112/1	Research Laboratory	72	Completed	Completed	Completed
167	2112/2	Additional Workshop	158.96	Completed	Completed	Completed
168	2210/1	Laboratory	96	Completed	Completed	Completed
169	2210/2	Laboratory	114	Completed	Completed	Completed
170	2306/1	Tutorial Rooms – PG	37	Completed	Completed	Completed
171	2306/2	Tutorial Rooms – PG	37	Completed	Completed	Completed
172	2310/1	Tutorial Room	35	Completed	Completed	Completed
173	2310/2	Tutorial Room	35	Completed	Completed	Completed
174	2310/3	Tutorial Room	35	Completed	Completed	Completed
175	3006/2	Laboratory	78	Completed	Completed	Completed
176	3106/1	Laboratory	76	Completed	Completed	Completed
177	3106/2	Laboratory	76	Completed	Completed	Completed
178	3306/1	Laboratory	72	Completed	Completed	Completed
179	3306/2	Laboratory	70	Completed	Completed	Completed
180	3307/1	Laboratory	72	Completed	Completed	Completed
181	3307/2	Laboratory	71.2	Completed	Completed	Completed
182	7102/1	Tutorial Rooms – PG	33	Completed	Completed	Completed
183	7102/2	Tutorial Rooms – PG	33	Completed	Completed	Completed
184	7107/1	Tutorial Rooms – PG	33	Completed	Completed	Completed
185	7107/2	Tutorial Rooms – PG	33	Completed	Completed	Completed
186	7401/1	Tutorial Room	33	Completed	Completed	Completed
187	7401/2	Tutorial Room	33	Completed	Completed	Completed

Green Audit Report, WOU

188	7402/1	Tutorial Room	33	Completed	Completed	Completed
189	7402/2	Tutorial Room	33	Completed	Completed	Completed
190	8005/1	Laboratory	72	Completed	Completed	Completed
191	8005/2	Laboratory	72	Completed	Completed	Completed
192	8108/1	Laboratory	66	Completed	Completed	Completed
193	8108/2	Laboratory	66	Completed	Completed	Completed
194	8109/1	Classroom	66	Completed	Completed	Completed
195	8109/2	Laboratory	66	Completed	Completed	Completed
196	8303/1	Laboratory	72	Completed	Completed	Completed
197	8303/2	Laboratory	72	Completed	Completed	Completed
198	8307/1	Tutorial Room	72	Completed	Completed	Completed
199	8307/2	Tutorial Room	72	Completed	Completed	Completed
200	8308/1	Tutorial Room	74	Completed	Completed	Completed
201	8308/2	Tutorial Room	74	Completed	Completed	Completed
202	8313/1	Laboratory	72	Completed	Completed	Completed
203	8313/2	Laboratory	72	Completed	Completed	Completed
204	9109/1	Tutorial Rooms – PG	45	Completed	Completed	Completed
205	9109/2	Tutorial Rooms – PG	45	Completed	Completed	Completed
Total			17887.01			
ADMINISTRATIVE AREA						
1	1001	Exam Control Office	142	Completed	Completed	Completed
2	1002	Exam Control Office	70	Completed	Completed	Completed
3	1003	Exam Control Office	142	Completed	Completed	Completed
4	1004	Principal Office	105	Completed	Completed	Completed
5	1005	Admin Office Inclusive	325	Completed	Completed	Completed
6	1006	Housekeeping	35.64	Completed	Completed	Completed
7	1105	Maintenance	70	Completed	Completed	Completed
8	1206	Faculty Room	105	Completed	Completed	Completed
9	1306	Faculty Room	105	Completed	Completed	Completed
10	2001/1	Dean's Room	46	Completed	Completed	Completed
11	2012/1	Director's Room	46	Completed	Completed	Completed
12	2107	HOD (MECH) Room	46	Completed	Completed	Completed

Green Audit Report, WOU

13	2110	Faculty Room	102.22	Completed	Completed	Completed
14	2305	Faculty Room	190	Completed	Completed	Completed
15	2313/1	Faculty Room	102	Completed	Completed	Completed
16	3005	Faculty Room	35	Completed	Completed	Completed
17	3006/1	Faculty Room	35	Completed	Completed	Completed
18	3105	Faculty Room	35	Completed	Completed	Completed
19	3205/1	HOD ROOM	43.05	Completed	Completed	Completed
20	3206	Faculty Room	35	Completed	Completed	Completed
21	3305	Faculty Room	35	Completed	Completed	Completed
22	4002	Faculty Room	88	Completed	Completed	Completed
23	5005	Placement Office	174.9	Completed	Completed	Completed
24	5008	Central Store	30	Completed	Completed	Completed
25	5009	House Keeping	20	Completed	Completed	Completed
26	6002	Pantry for Staff	23.75	Completed	Completed	Completed
27	7001	Faculty Room	74	Completed	Completed	Completed
28	7002	Department Office	49.5	Completed	Completed	Completed
29	7101	Faculty Room	74	Completed	Completed	Completed
30	7201	Faculty Room	74	Completed	Completed	Completed
31	7301	Faculty Room	74	Completed	Completed	Completed
32	7403	Faculty Room	49.2	Completed	Completed	Completed
33	8001	Faculty Room	72	Completed	Completed	Completed
34	8002	HOD ROOM (CONFERENCE/DTP/HOD)	98	Completed	Completed	Completed
35	8103	Faculty Room	15	Completed	Completed	Completed
36	8105	Faculty Room	15	Completed	Completed	Completed
37	8202	Faculty Room	15	Completed	Completed	Completed
38	8305/1	Faculty Room	15	Completed	Completed	Completed
39	8305/2	Faculty Room	15	Completed	Completed	Completed
40	8009	HOD, H&S	37	Completed	Completed	Completed
41	8015	Faculty Room	15	Completed	Completed	Completed
42	8106	Faculty Room	15	Completed	Completed	Completed
43	8107	Faculty Room	15	Completed	Completed	Completed

Green Audit Report, WOU

44	8208	Faculty Room	15	Completed	Completed	Completed
45	8311	Faculty Room	15	Completed	Completed	Completed
46	8312	Faculty Room	15	Completed	Completed	Completed
47	9001	HOD & Dept. Office.	36	Completed	Completed	Completed
48	9002	Board Room	41.39	Completed	Completed	Completed
49	9006	Faculty Room	36	Completed	Completed	Completed
50	9007	Faculty Room	35	Completed	Completed	Completed
51	9015	Faculty Room	66	Completed	Completed	Completed
52	9016	Security Room	35	Completed	Completed	Completed
53	9105	Faculty Room	35	Completed	Completed	Completed
54	9110	Faculty Room	35	Completed	Completed	Completed
55	9204	Faculty Room	35	Completed	Completed	Completed
56	10002	Faculty Room	20	Completed	Completed	Completed
57	11002	Faculty Room	20	Completed	Completed	Completed
Total			3347.65			
AMENITIES AREA						
1	1007	Gents Toilet	35	Completed	Completed	Completed
2	1103	Ladies Toilet	35	Completed	Completed	Completed
3	1109	Store Room	48.7	Completed	Completed	Completed
4	1110	Gents Toilet	35	Completed	Completed	Completed
5	1203	Ladies Toilet	35	Completed	Completed	Completed
6	1303	Ladies Toilet	35	Completed	Completed	Completed
7	1309	Gents Toilets	35	Completed	Completed	Completed
8	2304	GENTS TOILET	20	Completed	Completed	Completed
9	2310	LADIES TOILET	15	Completed	Completed	Completed
10	2313/2	FACULTY ROOM TOILET	10	Completed	Completed	Completed
11	2001/2	Dean's Room toilet	10	Completed	Completed	Completed
12	2004	Toilet (Male)	15	Completed	Completed	Completed
13	2010	Toilet (Female)	25	Completed	Completed	Completed
14	2012/2	Director's Room toilet	10	Completed	Completed	Completed
15	2104	Toilet (Male)	34.7	Completed	Completed	Completed
16	2111	Toilet (Female)	34.5	Completed	Completed	Completed

Green Audit Report, WOU

17	2204	Toilet (Male)	34.5	Completed	Completed	Completed
18	3001	Gents toilet	42	Completed	Completed	Completed
19	3005/1	Faculty Room Toilet	14	Completed	Completed	Completed
20	3101	Ladies Toilet	42	Completed	Completed	Completed
21	3201	Gents Toilet	42	Completed	Completed	Completed
22	3205/1	Toilet	14	Completed	Completed	Completed
23	3301	Ladies Toilet	37.7	Completed	Completed	Completed
24	3401	Gents Toilet	42	Completed	Completed	Completed
25	5003	Girls Toilet	35	Completed	Completed	Completed
26	5004	Boys Toilet	35	Completed	Completed	Completed
27	5102	Girls Toilet	35	Completed	Completed	Completed
28	5103	Gents Toilet	35	Completed	Completed	Completed
29	5106	Dining Hall	105	Completed	Completed	Completed
30	5302/1	Sports & Gymnasium	104.5	Completed	Completed	Completed
31	5302/2	Girls Common Room	100	Completed	Completed	Completed
32	5303	First Aid cum Sick Room	66	Completed	Completed	Completed
33	5306	Gents Toilet	35	Completed	Completed	Completed
34	5307	Girls Toilet	35	Completed	Completed	Completed
35	5006	Others	20	Completed	Completed	Completed
36	5007	Sationary Store	20	Completed	Completed	Completed
37	6001	Cafeteria	263.09	Completed	Completed	Completed
38	7003	Gent's Toilet	32	Completed	Completed	Completed
39	7103	Ladies Toilet	32	Completed	Completed	Completed
40	7203	Gent's Toilet	25	Completed	Completed	Completed
41	7303	Ladies Toilet	25	Completed	Completed	Completed
42	7407	Store Room	12.2	Completed	Completed	Completed
43	8003	GENTS TOILETS	45	Completed	Completed	Completed
44	8004	LADIES TOILETS	45	Completed	Completed	Completed
45	8204	GENTS TOILETS	45	Completed	Completed	Completed
46	8205	LADIES TOILETS	20	Completed	Completed	Completed
47	8010	Girls Common Room	102	Completed	Completed	Completed
48	8013	LADIES TOILET	66	Completed	Completed	Completed

Green Audit Report, WOU

49	8113	GENTS TOILET	70	Completed	Completed	Completed
50	8217	LADIES TOILET	66	Completed	Completed	Completed
51	8402	PUMP HOUSE	144.6	Completed	Completed	Completed
52	9008	Central stores	33.75	Completed	Completed	Completed
53	9009	Toilet	23.25	Completed	Completed	Completed
54	9010	Ladies Toilet	30	Completed	Completed	Completed
55	9011	Gents Toilet	30	Completed	Completed	Completed
56	9307	Student activity / GCR	38	Completed	Completed	Completed
57	9106	Girls Toilet	35	Completed	Completed	Completed
58	9107	Boys Toilet	30	Completed	Completed	Completed
59	9301	Boys Common Room	195	Completed	Completed	Completed
60	9303	Student activity / GCR	45	Completed	Completed	Completed
61	9304	Toilet	20	Completed	Completed	Completed
62	9305	Student activity / GCR	45	Completed	Completed	Completed
63	9306	Toilet	20	Completed	Completed	Completed
64	9302	Auditorium	644.05	Completed	Completed	Completed
65	12004	Toilet	18	Completed	Completed	Completed
66	12005	Toilet	18	Completed	Completed	Completed
Total			3544.54			
INSTRUCTION AREA COMMON FACILITIES						
1	5201	Library&Reading Room	1205	Completed	Completed	Completed
2	5105	Computer Centre	134	Completed	Completed	Completed
3	5202	Computer Centre	320	Completed	Completed	Completed
4	5104	Computer Centre	135	Completed	Completed	Completed
5	8406	Language Laboratory	96	Completed	Completed	Completed
6	8007	Language Laboratory	74	Completed	Completed	Completed
7	8008	Language Laboratory	74	Completed	Completed	Completed
8	8006	Language Laboratory	144	Completed	Completed	Completed
9	9108	Library&Reading Room	150	Completed	Completed	Completed
Total			2332			

Consolidated Area Statement for Existing & Proposed Courses

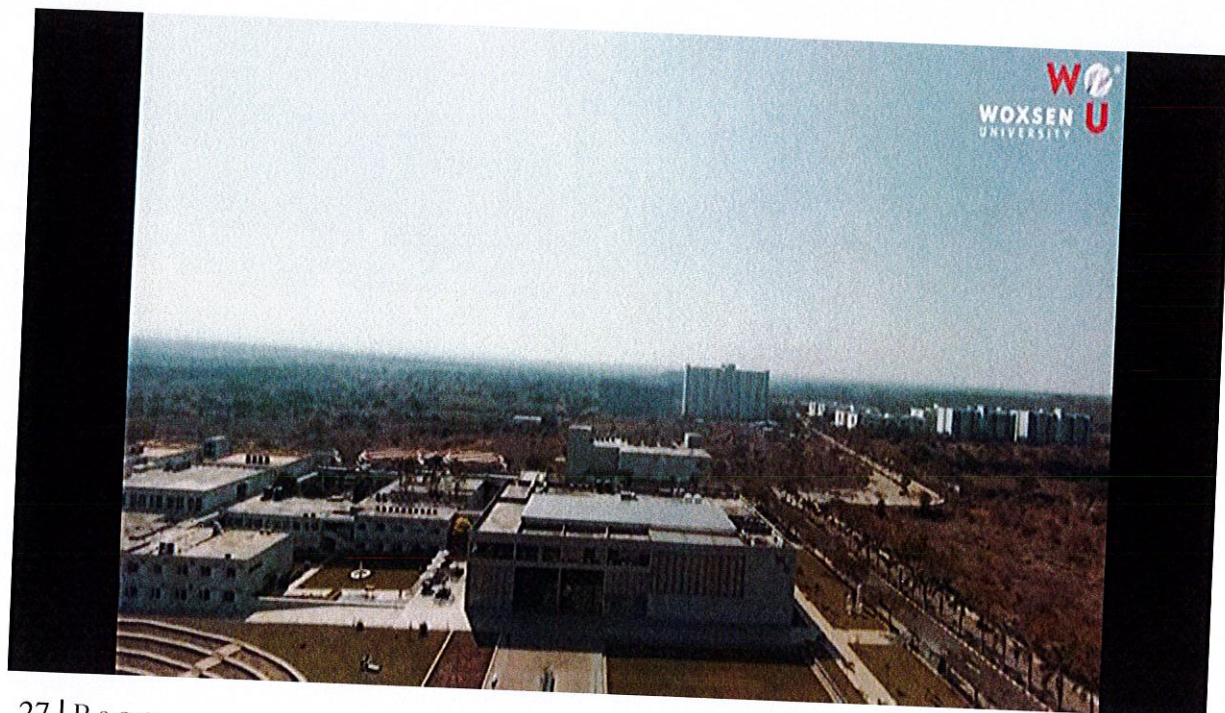
Instructional Area	17887.01 Sqm
Administrative Area	3347.65 Sqm
Amenities Area	3544.54 Sqm
Instruction Area Common Facilities	2332 Sqm
Circulation Area	14509.21 Sqm
Total Area	41620 Sqm

FINDINGS:

WOXSEN University, which was established in the year 2014, has an eco-friendly environment. It has a long legacy of healthy environmental practices including periodic plantation, their preservation and maintenance. Its land use is such that about 65% of the total area is occupied by open land and plantation that generates a better and sustainable campus environment.

TREE DIVERSITY OF WOXSSEN University, Telangana:

WOXSSEN University is within the geo-position between latitude 17°38'51.7"N and longitude 77°47'55.3"E in WOXSSEN University, Telangana, India. It encompasses an area of about 200 Acres. The area is immensely diverse with a variety of tree species performing a variety of functions. Most of these tree species are planted in different periods of time through various plantation programs organised by the authority and have become an integral part of the University. The trees of the University have increased the quality of life, not only the University fraternity but also the people around of the University in terms of contributing to our environment by providing oxygen, improving air quality, climate amelioration, conservation of water, preserving soil, and supporting wildlife, controlling climate by moderating the effects of the sun, rain and wind. Leaves absorb and filter the sun's radiant energy, keeping things cool in summer. Many species of birds are dependent on these trees mainly for food and shelter. Nectar of flowers and plants is a favorite of birds and many insects. Leaf – covered branches keep many animals, such as birds and squirrels, out of reach of predators. Different species display a seemingly endless variety of shapes, forms, texture and vibrant colours. Even individual trees vary their appearance throughout the course of the year as the seasons change. The strength, long lifespan and regal stature of trees give them a monument – like quality. They also remind us the glorious history of WOXSSEN University and our institution in particular. We often make an emotional connection with these trees and sometime become personally attached to the ones that we see every day. A thick belt of large shady trees in the periphery of the University have found to be bringing down noise and cut down dust and storms. Thus, the University has been playing a significant role in maintaining the environment of the entire WOXSSEN University and its surrounding areas. The following are the tree species with whom we are being attached-



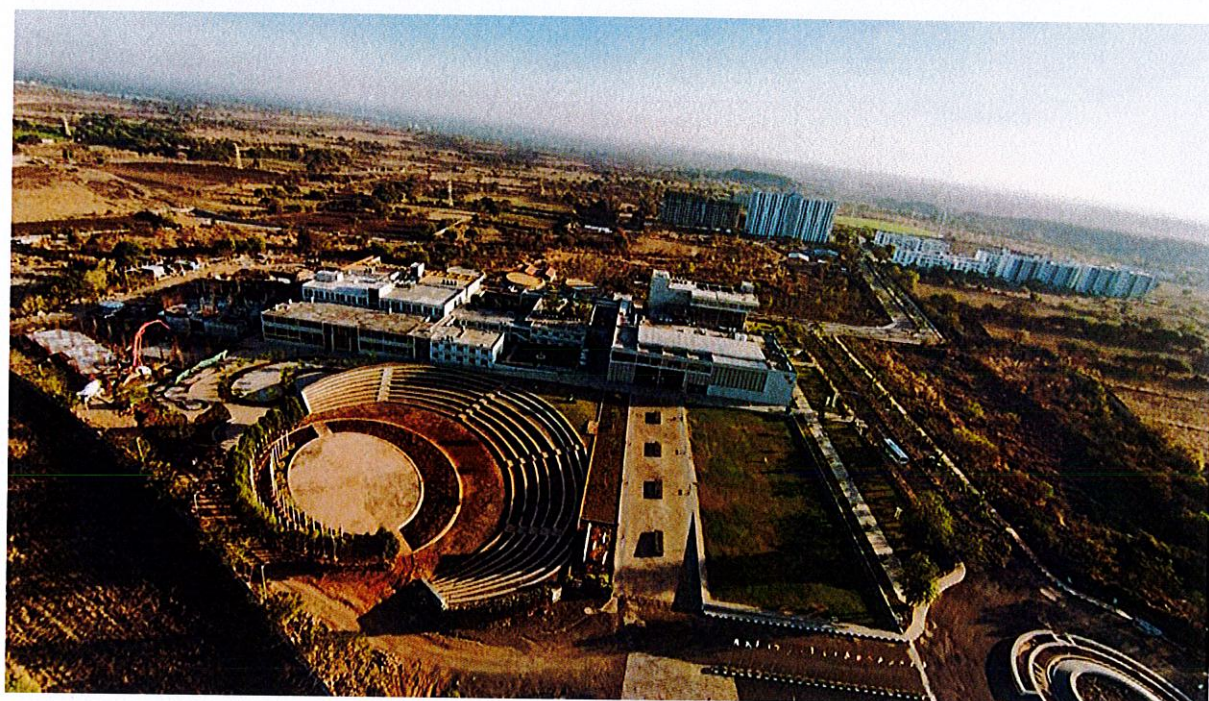






Table: List of tree species of WOXSEN University, Telangana

S.N o.	Botanical Name	Family	Common Name	Total
1	Mangifera indica	Anacardiaceae	Mango	195
2	Alstonia Scholaris	Apocynaceae	Alstonia	167
3	Tabernaemontana divaricata	Apocynaceae	Crape jasmine	4
4	Araucaria heterophylla	Araucariaceae	Christmas Tree	19
5	Arecaceae	Arecaceae	Palm	93
6	Hyophorbe lagenicaulis	Arecaceae	Bottle Palm	23
7	Roystonea regia	Arecaceae	Cuban royal palm	3
8	Phoenix sylvestris	Arecaceae	Badela Palm	2
9	Terminalia bellirica	Combretaceae	Bahera	49
10	Platycladus orientalis	Cupressaceae	Oriental thuja	67
11	Saraca asoca	Fabaceae	Ashoka	154
12	Dalbergia sissoo	Fabaceae	Sissu / Tali	56
13	Vachellia nilotica	Fabaceae	Kikar	19
14	Cassia fistula	Fabaceae	Golden shower tree	13
15	Delonix regia	Fabaceae	Royal Poinciana	3
16	Tamarindus indica	Fabaceae	Tamarind	1
17	Tectona grandis	Lamiaceae	Sagwan	25
18	Punica granatum	Lythraceae	Pomegranate	1
19	Chukrasia velutina	Meliaceae	Chukrasia tabularis	123
20	Azadirachta indica	Meliaceae	Neem	27
21	Melia azedarach	Meliaceae	umbrella tree	21
22	Toona ciliata	Meliaceae	Tun	1
23	Morus alba	Moraceae	White mulberry	27
24	Ficus religiosa	Moraceae	Peepal	17

25	Ficus virens	Moraceae	White Fig	16
26	Ficus elastica	Moraceae	Rubber Plant	7
27	Moringa oleifera	Moringaceae	saujana	2
28	Syzygium cumini	Myrtaceae	Jamun	68
29	Psidium	Myrtaceae	Gauva	54
30	eucalypts	Myrtaceae	Safeda	26
31	Syzygium aromaticum	Myrtaceae	Clove	3
32	Pongamia Pinata	Papilionaceae	Indian Beech tree	11
33	Phyllanthus emblica	Phyllanthaceae	Gooseberry	19
34	Bambusoideae	Poaceae	Bamboo	2
35	Grevillea robusta	Proteaceae	Silver Oak	58
36	Ziziphus mauritiana	Rhamnaceae	Ber	10
37	Prunus persica	Rosaceae	Pears	20
38	Pyrus pyrifolia	Rosaceae	Nakh	20
39	Prunus bokharensis	Rosaceae	Aloo Bukhara	8
40	Rosa	Rosaceae	Rose	90
41	Citrus limon	Rutaceae	Lemon	23
42	Citrus limetta	Rutaceae	Mausambi	8
43	Murraya koenigii	Rutaceae	Curry Leaf	2
44	Aegle marmelos	Rutaceae	wood apple	1
45	Gmelina arborea	Rutaceae	Beechwood	1
46	Populus	salicaceae	Poplar	35
47	Litchi chinensis	Sapindaceae	Litchi	11
48	Mimusops elengi	Sapotaceae	Maulsari	30
49	Madhuca longifolia	Sapotaceae	Mahua/ Indian Butter Tree	14
50	Manilkara zapota	Sapotaceae	Chiku/Sapodilla	11
51	Vitis Vinifera	Vitaceae	Kismish/Raisins	29

	Ficus benamina	Fig family	Faux	427
53	Bugal Bael	Bugal Bael	49
54	Dakein	Dakein	44
55	Citrus Reticulata	Rutaceae	Kinnow	39
56	Sukhmani	Sukhmani	29
57	Faux Black Kina	Faux Black Kina	22
58	Ficus Benghalensis	Moraceae	Barota	16
59	Badelia Kandia Flower	Badelia Kandia Flower	10
60	Momesia	Momesia	10
61	Rakh Manjan	Rakh Manjan	9
62	Red Faux	Red Faux	8
63	Mimusops	Sapotaceae	Sari	7
64	Flower Faux	Flower Faux	6
65	Needi	Needi	6
66	Ajmohar	Ajmohar	5
67	Green Fax	Green Fax	3
68	Faux (White)	Faux (White)	2
69	Gul Lakkar	Gul Lakkar	1
70	Tarbeni	Tarbeni	1
Total				238 3

FAUNAL DIVERSITY IN WOXSSEN University CAMPUS:

WOXSSEN University is located in District of Sangareddy Indian State of TS. The highest temperature is recorded 42⁰ C just prior to the onset of monsoon (around May- early June). Summer rain is normal, and is principally caused from late June to August by the moisture-laden South-West Monsoon, on striking the Himalayan foothills of the north. The climatic condition of the WOXSSEN University in particular is very suitable for a wide variety of flora and fauna to support its rich biodiversity. The faunal Diversity of WOXSSEN University campus has been studied and documented as below:

Table: Common and Scientific names of birds and animals

S.No	Common Name	Scientific Name
1.	Common Myna	Acridotheres Tristis
2.	Bank Myna	Acridotheres Ginginianus
3.	House Sparrow	Passer Domesticus
4.	House Crow	Corvus Splendens
5.	Cuckoo	Cuculidae
6.	Snake	Naja Naja
7.	Yellow Wasp	Ropalidia Marginata
8.	Butter Fly	Danaus Genutia
9.	Common Woodshrike	Tephrodornis Pondicerianus
10.	Pied Myna	Gracupica Contra
11.	Red-Vented Bulbul	Pycnonotus Cafer
12.	Skylark	Aluda Gulgula
13.	Garden Tiger Moth	Arctia Caja
14.	Little Owl	Athene Brama
15.	Oleander Moth	Syntomeida Epilais
16.	Slender Skimmer	Orthetrum Sabina

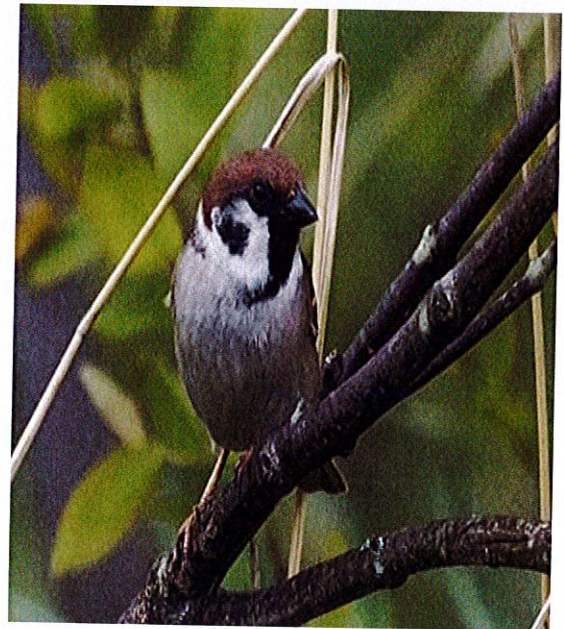
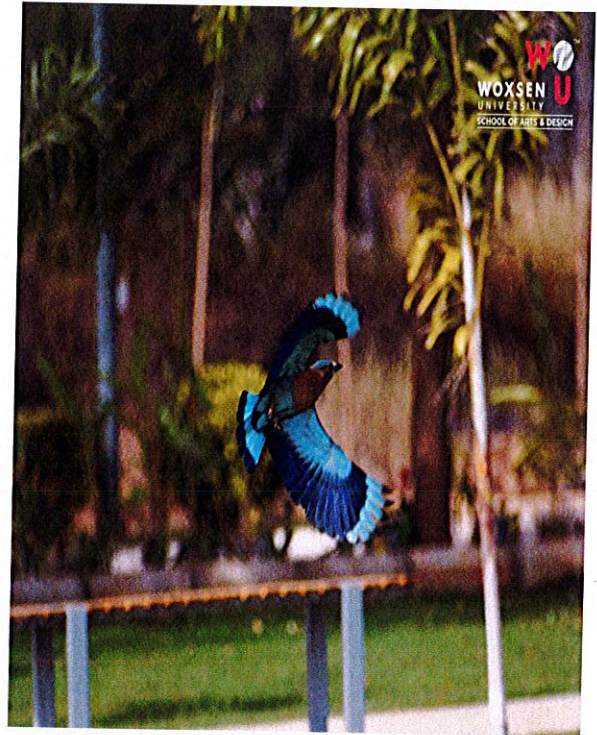
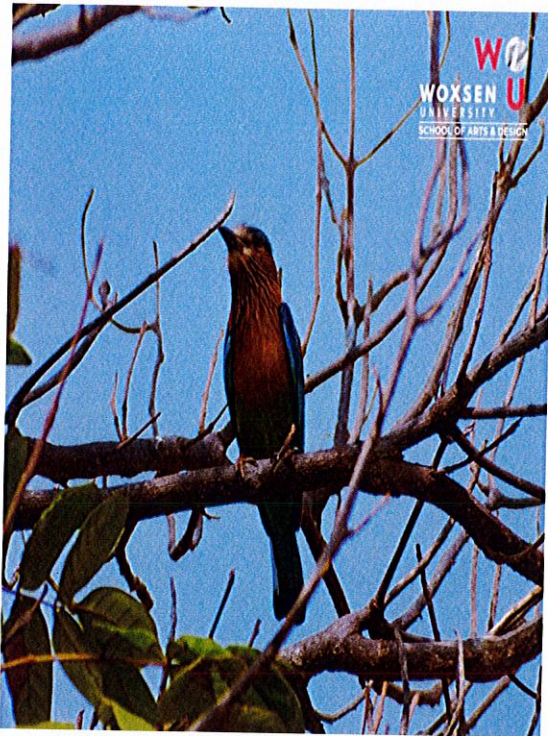


Photo 8: Common Myna (Acridotheres Tristis)

Photo 9: House Sparrow (Passer Domesticus)



Photo 11: House Crow (*Corvus Splendens*)



Photo 12: Cuckoo (*Cuculidae*)



Photo 13: Snake (*Naja Naja*)



Photo 14: Yellow Wasp (*Ropalidia Marginata*)



Photo 15: Butter Fly (Danaus Genutia)

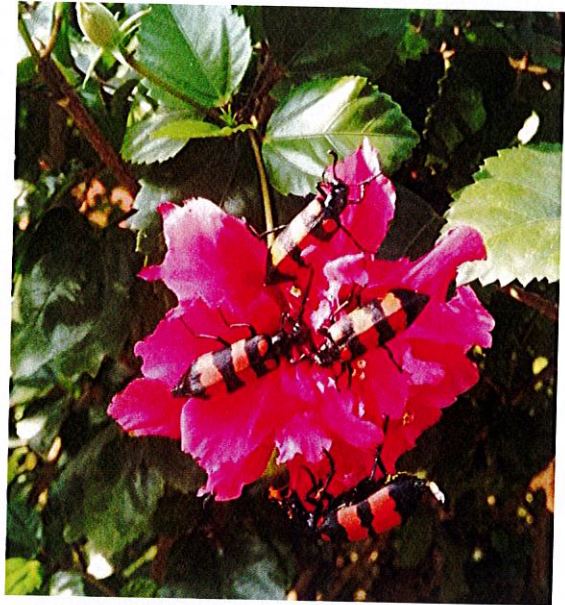


Photo 16: Beetle insect on a hibiscus flower

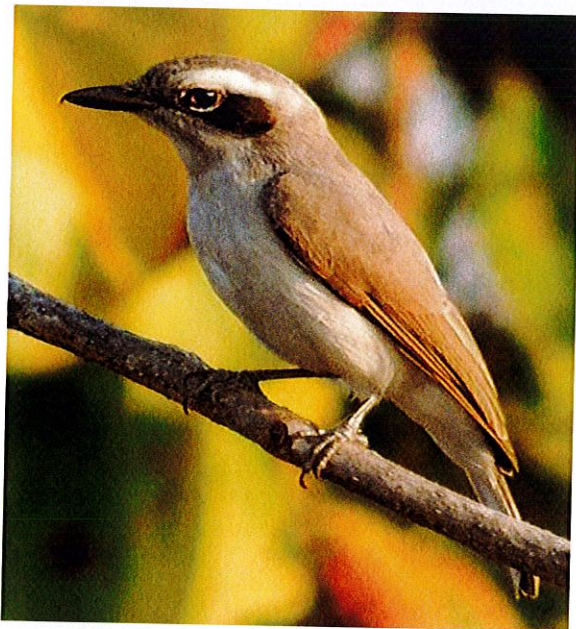


Photo 17: Common Woodshrike
(Tephrodornis Pondicerianus)



Photo 18: Pied Myna (Gracupica Contra)



Photo 19: Red-Vented Bulbul (*Pycnonotus Cafer*)



Photo 20: Skylark (*Aluda Gulgula*)



Photo 21: Garden Tiger Moth (*Arctia Caja*)

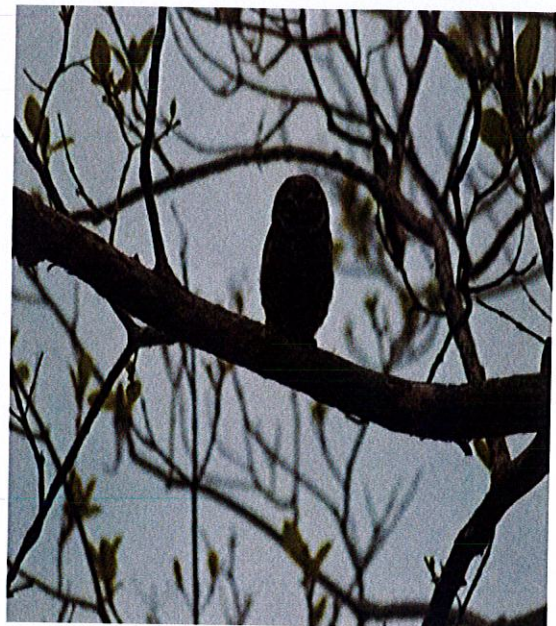


Photo 22: Little Owl (*Athene Brama*)

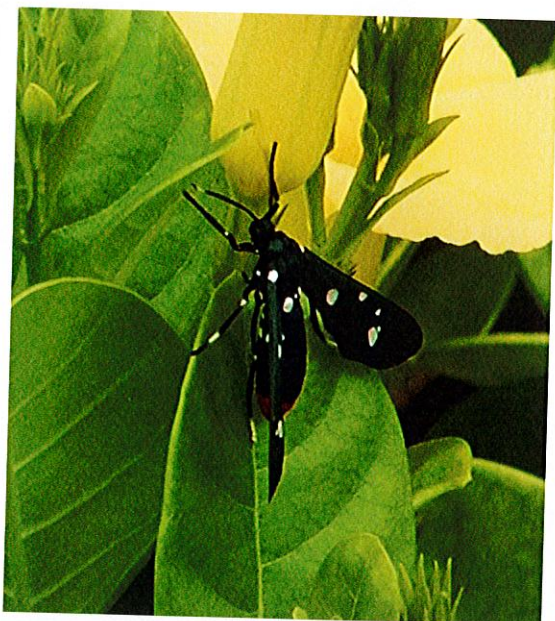


Photo 23: Oleander Moth (*Syntomeida Epilais*)

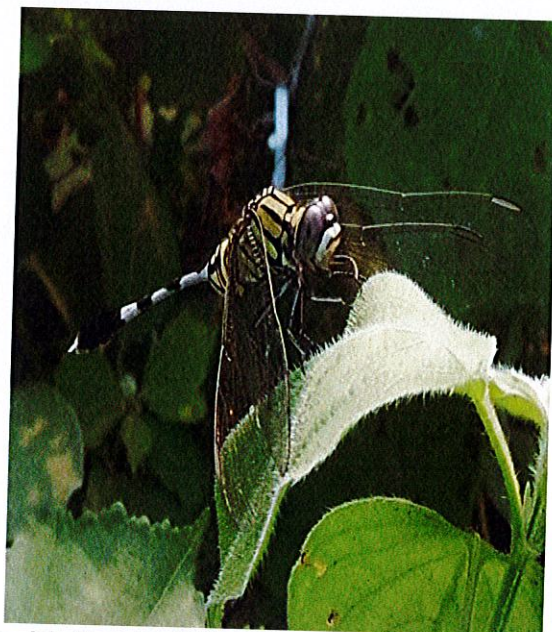


Photo 24: Slender Skimmer (*Orthetrum Sabina*)

WEATHER DATA OF WOXSSEN University: Station: WOXSSEN University
(INDIA Location: 17°38'51.7"N 77°47'55.3"E)

In WOXSSEN University, the climate is warm and temperate. The summers are much rainier than the winters in WOXSSEN University. The average annual temperature in WOXSSEN University is 24.3 °C. and precipitation level is about 770 mm.

The driest month is generally November. There is 4 mm of precipitation in November. The greatest amount of precipitation occurs in July, with an average of 256 mm. With an average of

6 °C, June is the warmest month. The lowest average temperatures in the year occur in January, when it is around 13.3 °C. The precipitation varies 252 mm between the driest month and the wettest month. The variation in temperatures throughout the year is 20.3 °C.

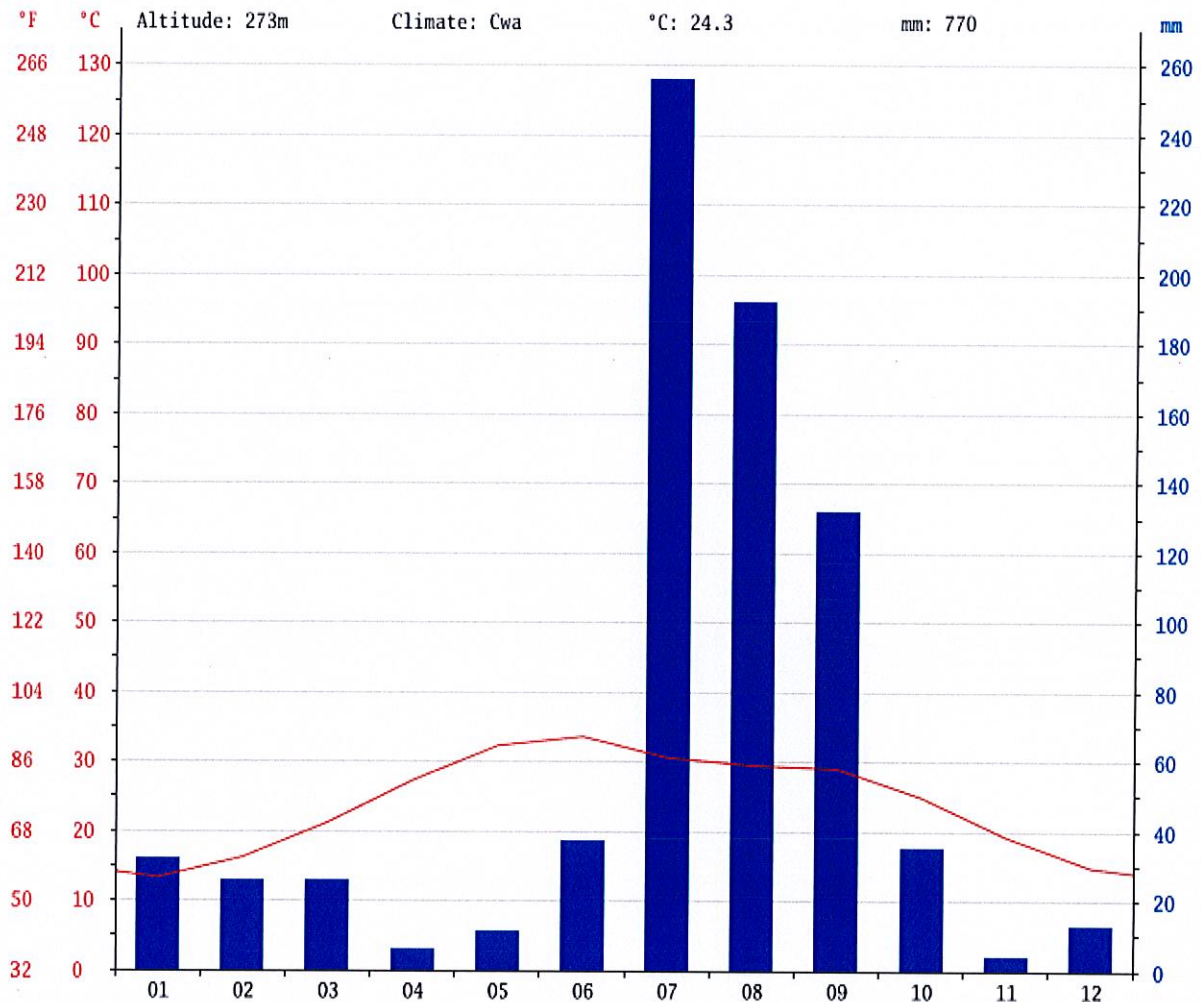
WEATHER DATA MONTH WISE WOXSSEN University

Temperature\Month	January	February	March	April	May	June	July	August	September	October	November	December
Avg. Temp. (°C)	13.3	16.2	21.2	27.3	32.3	33.6	30.6	29.5	29	24.9	19.2	14.8
Min. Temp (°C)	6.6	8.9	13.5	19	24.2	26.9	26.2	25.5	23.6	17.2	10.3	6.9
Max. Temp (°C)	20.1	23.6	29	35.7	40.4	40.4	35.1	33.6	34.5	32.7	28.2	22.8
Avg. Temp (°F)	55.9	61.2	70.2	81.1	90.1	92.5	87.1	85.1	84.2	76.8	66.6	58.6
Min. Temp (°F)	43.9	48.0	56.3	66.2	75.6	80.4	79.2	77.9	74.5	63.0	50.5	44.4
Max. Temp (°F)	68.2	74.5	84.2	96.3	104.7	104.7	95.2	92.5	94.1	90.9	82.8	73.0
Precipitation / Rainfall (mm)	32	26	26	6	11	37	256	192	132	35	4	13

The likes of an alluvial plain are strong characteristics of the city of WOXSSEN University and its surroundings. The city does have a Central location in the plan region. The geographical co-ordinate of WOXSSEN University are 17°38'51.7"N 77°47'55.3"E. The University has an average altitude of 808 feet or 246 meters from the average sea level. The erstwhile land of WOXSSEN University was very much feasible for peanut cultivation with sand dunes. However a lot of irrigation and environmental changes have made the land more viable for wheat cultivation.

The climatic conditions bear a strong resemblance with the other cities in the northern part of India. The summers are usually very hot and the winters are very cold. The summers are prevalent during the months of April to September with June, July, August till mid September being the hottest months. The winter is prevalent from the month of November till the month of March. There is onset of Monsoon in September and from mid of September till November one experiences the transitional weather.

CLIMATE GRAPH MONTH WISE WOXSSEN University



AIR QUALITY IN WOXSSEN University AND WOXSSEN University:

The ambient air quality data for WOXSEN University for the last one year shows that there are very less polluted particles in ambient air; AQI for SO₂ & NO_x parameters are within the range of Indian living standards, there are a number of factors responsible for this cleanliness, calmness and serenity in this area. Firstly, population which is most responsible for all the problems and hurdles in smooth living is lowest here of all the districts of TS. Secondly, in this area more trees have been planted as compared

to other cities. Furthermore, no air polluting industry is established here not even in a radius of 10 Km of WOXSEN University area. The university is located adjacent to the NH, which might be responsible for heavy density traffic throughout the year and thus might be causing lot of vehicular emissions as well as a lot of dust emissions due to the movement of vehicular traffic. Therefore, the ambient air quality of WOXSEN University Area falls in between moderate to rich quality state. The TS Pollution Control Board is pondering over the various possibilities to reduce the air pollution for the improvement of ambient air quality with respect to AQI is concerned. However, the annual average value of PM₁₀, SO₂, NO_x in the ambient air quality of WOXSEN University falls in the range of 50-62 µg/m³, 3-5 µg/m³, 10-12 µg/m³ for most of the months, as such, the graded response action plan to eradicate the problem

AIR QUALITY DETERMINATION

Satisfactory air quality index (OVERALL=58) in WOXSEN University, TS, India on dated 7th September 2022

Parameter	Result (Range)
NO ₂	25.4 µg/m ³ , AQI 26 Very Good
NO	10.09 µg/m ³ , AQI 10 Good
O ₃	31.49 µg/m ³ , AQI 31 Good
PM _{2.5}	28.13 µg/m ³ , AQI 28 Good
PM ₁₀	77.2 µg/m ³ , AQI 79 Satisfactory
CO	35.0 µg/m ³ , AQI 18
Humidity	56.0 %
Barometric Pressure	1013 millibar or hPa
Wind Speed	10-15 m/s
Wind Direction	28.0013 degrees
Sun Rise	06:28 AM
Sun Set	05:56 PM
Moonrise	07:05 PM
Moonset	07:31 AM

WATER ANALYSIS REPORT OF WOXSSEN University:

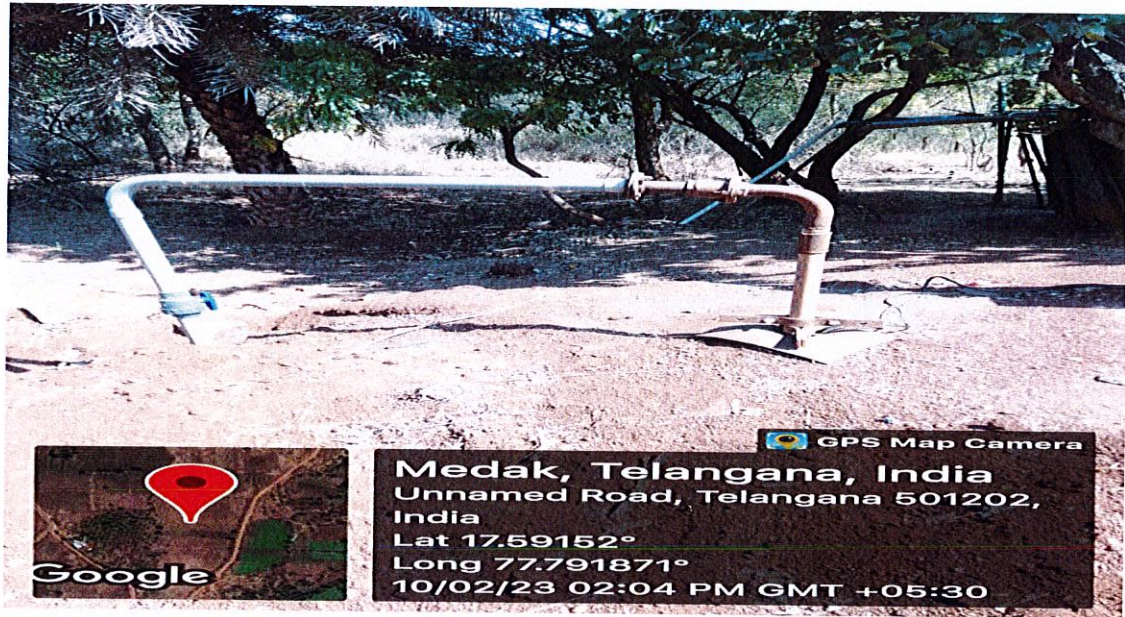
Water quality testing is important because it identifies contaminants and prevents water- borne diseases. Drinking or using contaminated water can result in severe illness or death. That is why it is important to ensure that drinking water is safe, clean and free from bacteria and disease.

The parameters for water quality are determined by the intended use. Work in the area of water quality tends to be focused on water that is treated for human consumption, or in the environment.

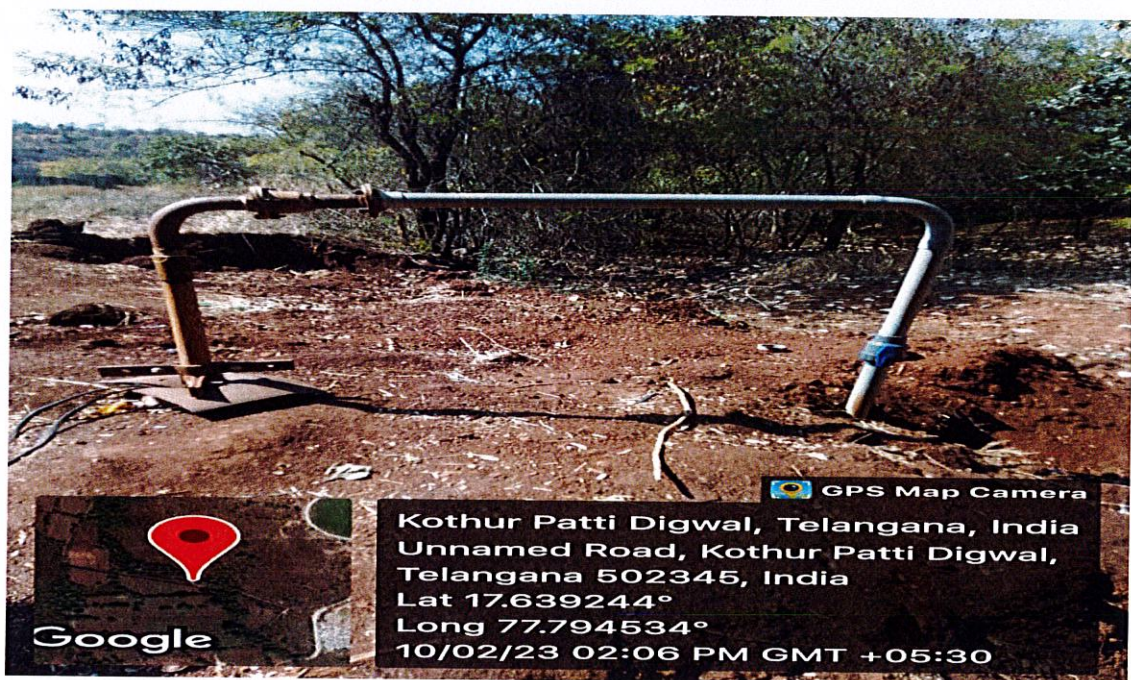
Drinking water indicators:

The following is a list of indicators often measured by situational category:

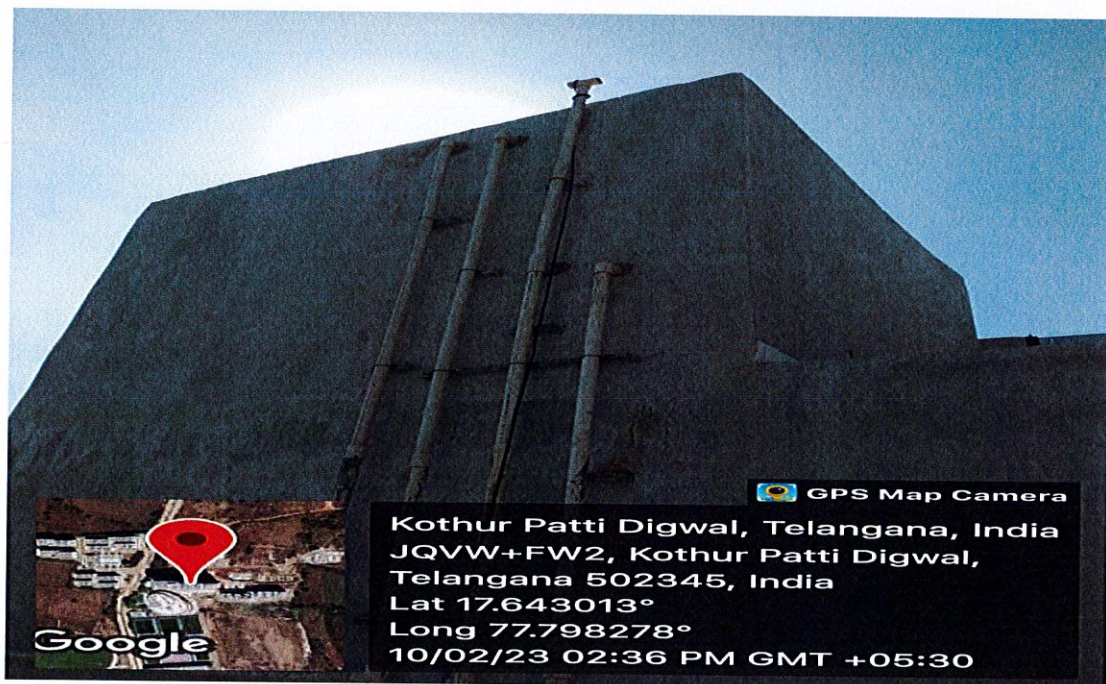
- Alkalinity
- Color of water
- pH value
- Taste and odor (geosmin, 2-Methylisoborneol (MIB), etc.)
- Dissolved metals and salts (sodium, chloride, potassium, calcium, manganese, magnesium)
- Microorganisms such as fecal coliform bacteria (*Escherichia coli*), *Cryptosporidium*, and *Giardia lamblia*; see Bacteriological water analysis
- Dissolved metals and metalloids (lead, mercury, arsenic, etc.)
- Dissolved organics: colored dissolved organic matter (CDOM), dissolved organic carbon (DOC)
- Heavy metals



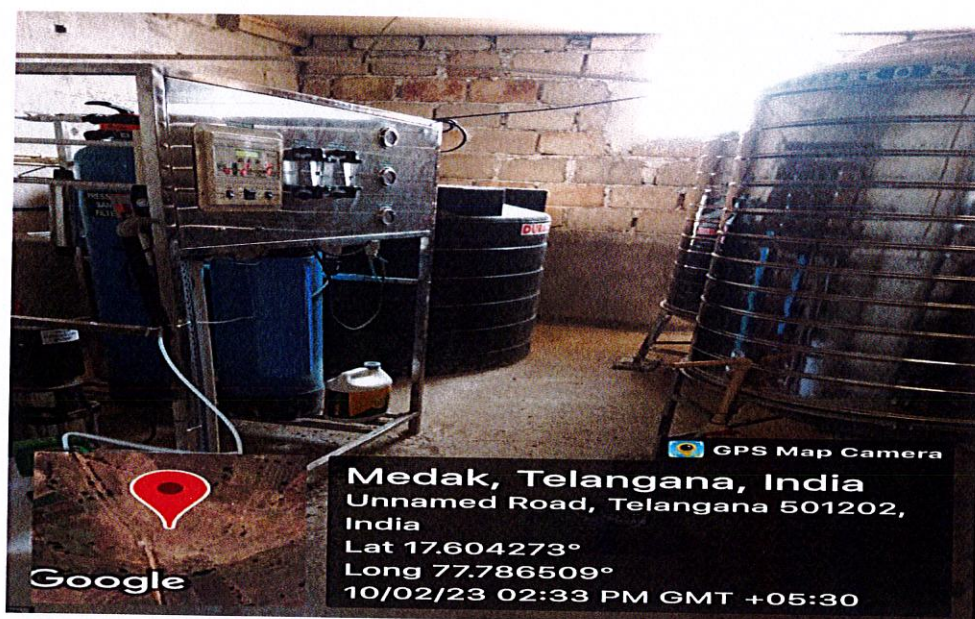
Bore Well - 1



Bore Well - 2



Over Head Tank



R.O Unit

NOISE LEVEL IN THE SURROUNDING OF WOXSEN University:

The human ear is constantly being assailed by man-made sounds from all sides, and there remain few places in populous areas where relative quiet prevails. There are two basic properties of sound:

- Loudness and
- Frequency.

Loudness is the strength of sensation of sound perceived by the individual. It is measured in terms of Decibels. Just audible sound is about 10 dB, a whisper about 20 dB, library place 30 dB, normal conversation about 35-60 dB, heavy street traffic 60-80 dB, boiler factories 120 dB, jet planes during take-off is about 150 dB, rocket engine about 180 dB. The loudest sound a person can stand without much discomfort is about 80 dB. Sounds beyond 80 dB can be safely regarded as Pollutant as it harms hearing system. The WHO has fixed 45 dB as the safe noise level for a city. For international standards a noise level up to 65 dB is considered tolerate. Loudness is also expressed in sones. One sone equals the loudness of 40 dB sound pressure at 1000 Hz. Frequency is defined as the number of vibration per second. It is denoted as Hertz (Hz).

MATERIALS, STUDY AREA & METHODS

Noise level meter or noise measuring app, Noise test pro (version: 1.0.2), was used to measure the noise level. Noise test pro detect of any noise, music or sound in your surroundings. It will tell you maximum, minimum and average decibels.

Noise Test

Noise Test

54

The highest dB:61 dB

The average dB:52 dB

The lowest dB:27 dB

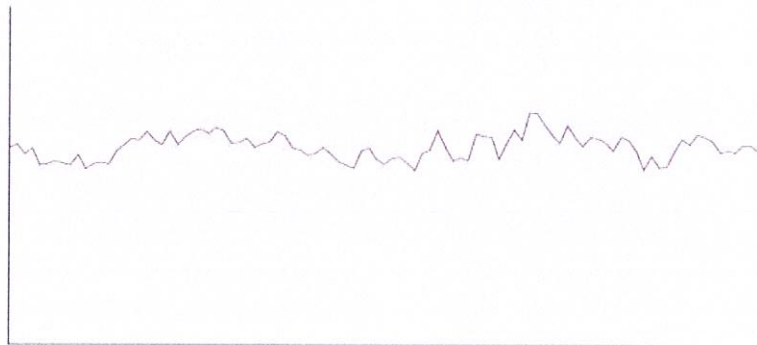


Figure: Noise Measurement by Noise Test Pro App

DESCRIPTION OF THE University SITE

The site of the WOXSEN University is located at 17.6441845,77.7997978,16.02z. Below photo shows the satellite image of the University site.

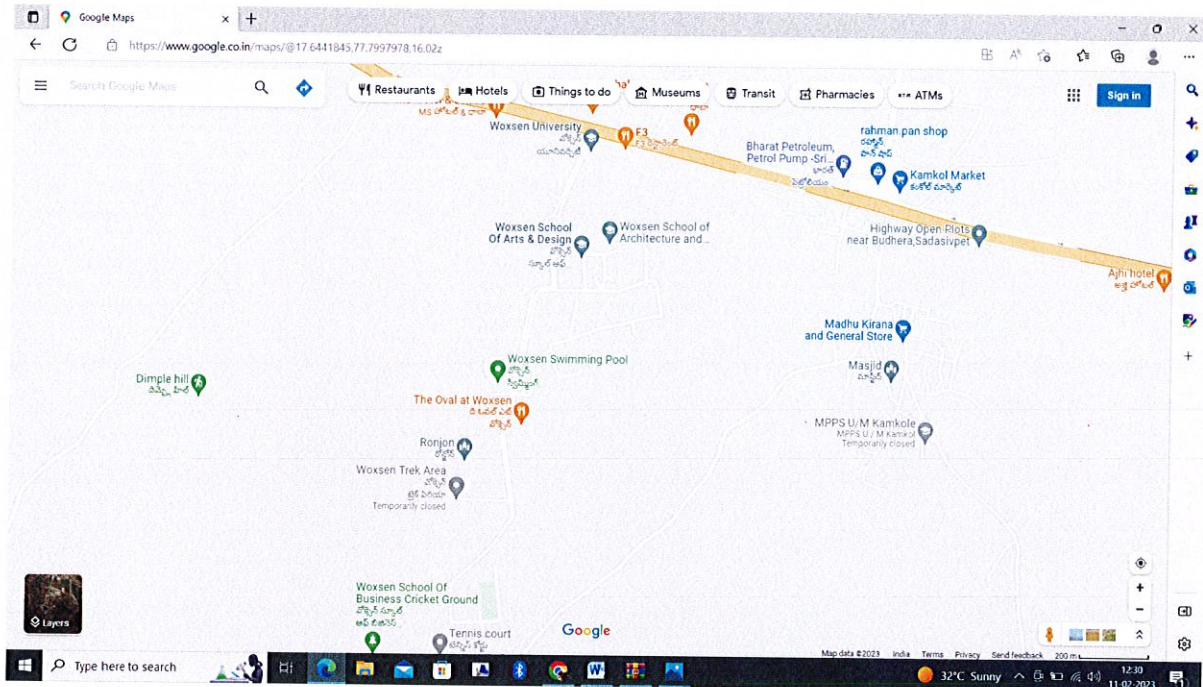


Photo 2: Aerial View of University Campus Part 2 (Source Google Earth)

MEASUREMENT PROCEDURE

The noise level was recorded at the different Important Locations of WOXSSEN University. At each spot, the measurements were taken for 60 seconds during day time (6 AM- 6 PM) and noted down the measurements. Screen shots of the measurements of noise were taken immediately on the app at the time of 60th second of each measurement.

RESULTS

The results of the experiments at different places have been tabulated in the following table:

Table 1: Measurements of Noise in and around WOXSSEN University:

<i>PLACE</i>	<i>MEASUREMENTS (Duration in Sec.)</i>	<i>MINIMUM (dBA)</i>	<i>Maximum (dBA)</i>	<i>AVERAGE (dBA)</i>
SOT	60	53	81	76
SOB	60	50	68	56
SOAP	60	59	74	70
SOAD	60	74	90	85
Library	60	51	85	65
SOL	60	57	84	78
Labs	60	45	89	72
SOH	60	50	81	73
SOS	60	66	85	76
VC Office	60	35	77	68
Auditorium	60	53	75	71
Workshop	60	66	90	78
Workshop	60	56	86	69
Ground 1	60	59	90	70
Ground 2	60	56	90	68
Generator Room	60	53	89	75
Gymnasium	60	68	82	76
Faculty Flats	60	35	80	69
Staff Flats	60	49	71	65

Guest House	60	50	77	67
University Front Gate	60	50.7	78.0	71.0
University Back Gate	60	54	75.9	73.5
Boys Hostel	60	54	68	62
Girls Hostel	60	52	90	68

Source: Data collected by Third Party Lab in the presence of GMCSPL Auditors. After the study, the measurements of noise have been recorded in and outside of WOXSEN University area:
Inside the Campus: 35-90 dBA,
Outside the Campus: 54-93 dBA

WASTE DISPOSAL OF WOXSEN University:

Waste disposal are the activities and actions required to manage waste from its inception to its final disposal. This includes the collection, transport, treatment and disposal of waste, together with monitoring and regulation of the waste management process.

The waste from all around the University is separated daily as wet and dry waste in different bags which are disposed separately. Dry waste includes paper, cardboard, glass tin cans etc. on the other hand; wet waste refers to organic waste such as vegetable peds, left-over food etc. Separation of waste is essential as the amount of waste being generated today causes immense problem. The material was composted and evaluated as a fertilizing material. Disposal of these waste results in the production of good quality organic manure that can be used as soil amendments and source of plant nutrients.

With smart initiatives like “Think Green Campus Model”, waste management is helping University’s to achieve a higher level of environmental performance. By reusing or recycling we are contributing to the conservation of natural resources, saving energy, helping to protect the environment, reducing landfill. We will also reduce our impact on the environment by minimizing the carbon emissions associated with both disposing of old products and obtaining new ones. WOXSEN University adopts environment friendly practices and takes necessary actions such as – energy conservation, waste recycling, carbon neutral etc. The biological reusable waste are processed as organic manure for the plants available in the University campus and the other solid waste generated in the University campus is taken to the community bin of WOXSEN University for recycling and disposal.

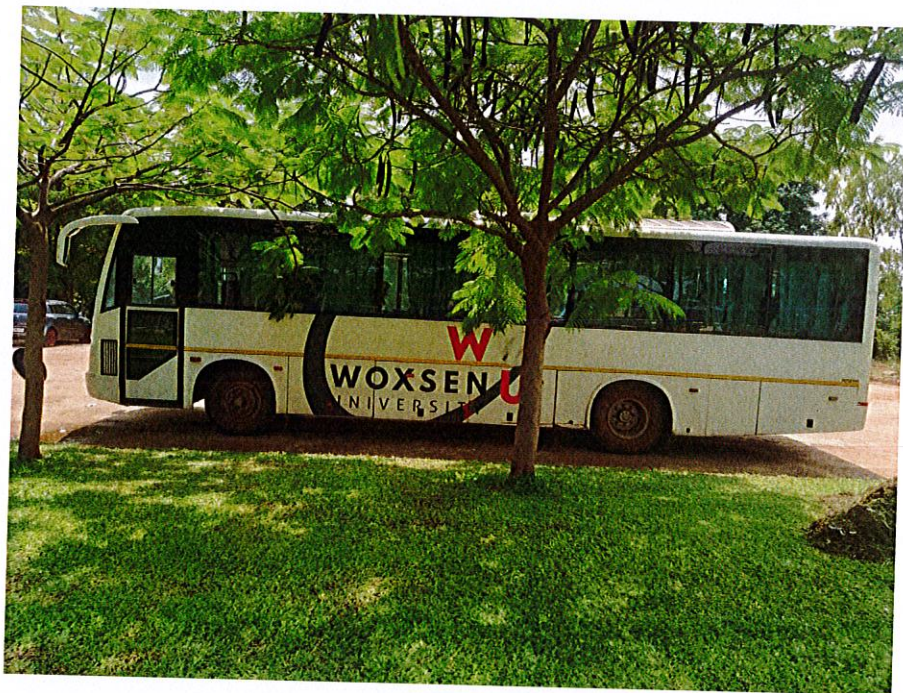


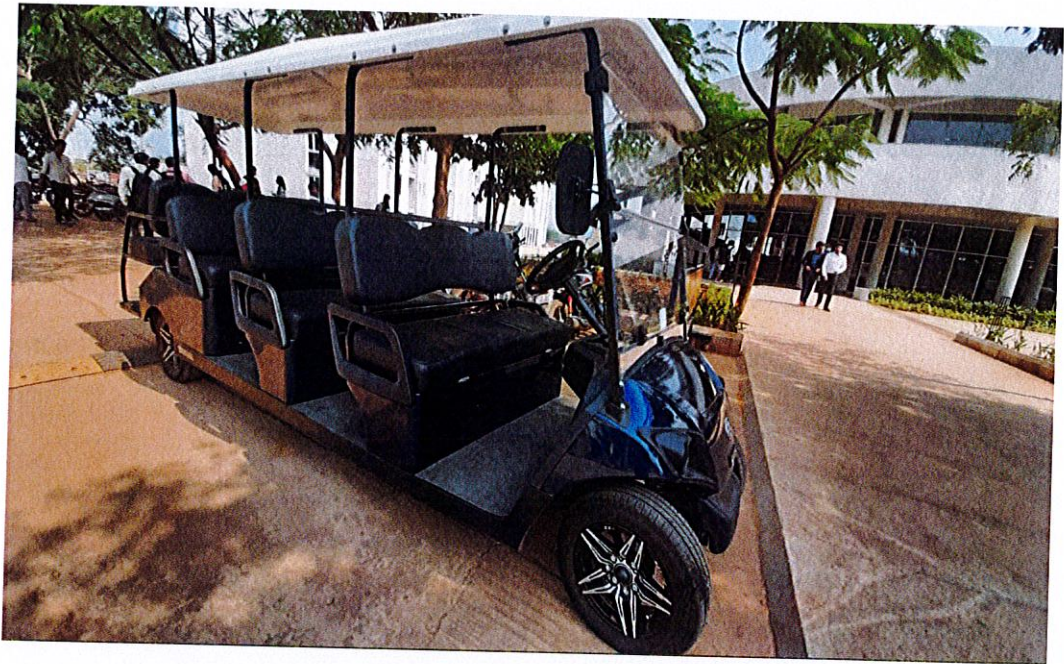
Store room.

TRANSPORTATION AT WOXSSEN University:

Being a largest residential campus in the region, WOXSSEN University minimizes the transportation of the students & staff. It has single bus which is used for outdoor transportation. The University is dedicated to provide its students and staff all the comfort and convenience to help them to achieve their targets. As a result students and staff will use E-vehicles and bicycles for internal transport. Buses emit approximate 20% less carbon monoxide, 10% as much hydrocarbons, and 75% as much nitrogen oxides per passenger mile as an automobile with a single occupant (Source: Wikipedia).

University Bus Picture:











ELECTRICAL POWER CONSUMPTION AT WOXSSEN University:

WOXSSEN University, being one of the largest Universities of Telangana, consumes on an daily average 310 kW- hr (units) of electricity which turns out to be 2700000 kW-hr per year only to maintain its volumetric activities throughout the year. The authority keeps on replacing the old filament bulbs, CFL bulbs and tube lights by low energy consuming LED bulbs and LED tubes and bulky high-power consuming fans by energy efficient fans in order to keep the electricity consumption of the University as low as possible.

In addition to making Environmental Studies a very vital subject in our syllabus, WOXSSEN University has gone a step further by putting that theory into practice. The University has gone ahead and signed an MOU with Ms Amplus Venus Pvt Ltd towards putting up a solar power plant with a total planning of 2.4MW in 3 progressive phases. The energy from this solar installation shall help in off setting the institute's daytime peak electricity demand from the grid. In phase 1, WOXSSEN University has started work towards erecting solar panels which shall generate 420KVA electricity daily and shall get operational by August 2023. This shall help University in meeting 5-10% of its demand via renewable source of energy and thus moving towards a more reliable and greener option and **reducing its carbon footprint.**

Percentage of annual power requirement of the Institution met by the renewable energy sources

Response: Phase 1- 5-10% ; Phase 2- 20-30% ; Phase 3- 50-60%

Annual power requirement met by the renewable energy sources (in KWH)

Response: 200000 approx. in phase 1; 450000 in phase 2; 1500000 in phase 3

Total annual power requirement (in KWH)

Response: 2700000 approx.



Power Requirements met by renewable energy sources	Total Power Requirements	Renewable energy Source	Renewable energy generated and used	Energy supplied to the grid
200000 KWH/year	2700000 KWH/Year	Solar	200000 KWH/year	

Total Annual Lighting Power Requirements = 7,50,000 KWH

Total Lighting Requirements	Percentage Lighting through LED Bulbs	Percentage Lighting through other sources
7,50,000 KWH/Year	84 %	

EXPENDITURE ON GREEN INITIATIVES DURING THE LAST TWO YEARS:

Financial Year	Tree plantation (Amount in Rs)	Gardening & lawn Work (Tractor Running & Maintenance)	Sewerage Treatment Plant	Purchase of LED's	Total (In Rupees)
2022 – 2023	1400000	2000000/-	17500000/-	1500000/-	21400000/-
2021 – 2022	1200000/-	1800000/-	750000/-	1250000/-	5000000/-